



Zone F/Zona F

Price per Zone



THE SALEM PANTRY

2024 IMPACT REPORT

Zone F/Zona F



Board of Trustees

Sean Monahan
Chair

Ashley Judge
Vice President

Daniel Fox
Treasurer

Alicia Klesseck
Clerk

Rebecca Babbitt Chafe
Nate Bryant
Ashley Ganem
Harry DeMonaco
Shawn McCannon
Sarah Morrill
Matt O'Neil
Elle Simone Scott
Mike Shea
Jenn Taylor
Christine Valdes, M.D.

PO Box 295
Salem, MA 01970
(978) 552-3954
thesalempantry.org



In This Report

A Letter From Leadership	3
What We Do!.....	4
Direct Service	4
Food Distribution Hub.....	5
2024 Impact	6
2024 Highlights.....	8
2024 Operating Financials... 	9
Partners	10
Volunteers	10
Donors and Donations.....	11



Support
Our
Mission

Nourishing Our Community

Welcome to The Salem Pantry’s 2024 Impact Report

For the second consecutive year, we’re proud to share the significant impact The Salem Pantry is making in Salem and across the North Shore, with direct service programs and by expanding food access for peer organizations through our regional Food Storage and Distribution Hub.

In 2024, we made substantial progress as an organization. We have grown our reach, worked to make our services more inclusive, and collaborated with organizations across the region to strengthen the local food safety net.

This year, our commitment remains strong. Even as we navigate shifting federal policies, the loss of key grant funding, and the threat of cuts to critical programs like SNAP and Medicaid, we continue to be a reliable resource for our neighbors and partners.

As you read about what we’ve accomplished together, we’re deeply grateful for the many ways our community continues to stand with us through donations, volunteer hours, and meaningful collaboration.

Thank you for standing with us, believing in our mission, and helping to build a healthier, more nourished North Shore.

Robyn Burns
Executive Director

Sean Monahan
Board Chair

What We Do!

Direct Service

The Salem Pantry is dedicated to providing our neighbors with food in the most convenient and dignified ways possible.

We consistently listen to our guests to identify ways to enhance our services. Through direct service like **The Market**, **The Truck**, and **Home Delivery**, we aim to ensure that everyone can access the food we provide.



The Truck made **585** stops in 2024

Mobile Pantry Program

Featuring The Truck, bringing fresh food to neighborhoods in a dignified way.

2,450 Families Served in 2024

In 2024:

31,500 NEIGHBORS SERVED **12,050** CHILDREN SERVED **2,754** SENIORS SERVED

“

Great stuff every week and kind people. I've brought many clients from my therapeutic community, and staff are always helpful with lots of fresh food.

-Charles, Guest



Market visits increased 50% from 2023 to 2024.

The Market

Designed to feel like your local grocery store, offering a comfortable way to access food.

7,270 Families Served in 2024



Home Delivery

Supporting homebound neighbors in Salem with weekly deliveries

2,240 Deliveries Made in 2024



Food Distribution Hub

The Salem Pantry's Food Distribution Hub demonstrates our commitment to collaboration, efficiency, and access to healthy food.

In partnership with **The Greater Boston Food Bank**, the Hub supports providers across the North Shore by helping them overcome barriers like limited transportation and storage.

Our **Food Storage and Distribution Warehouse** is equipped with refrigerated and freezer storage along with fully operational loading docks, enabling us to fill critical gaps in the regional food safety net.

“

We are better able to meet the needs of our community with the assistance of these pickups. The food hub has been a big help, the warehouse staff is excellent, and we are always met with friendly, helpful faces.

-Beverly Bootstraps Team

In 2024:

697,000 POUNDS SERVED

18 PARTNER AGENCIES

12 COMMUNITIES SUPPORTED



Food Storage and Distribution Warehouse

Stores, sorts and distributes food for The Salem Pantry operations and food assistance organizations across the North Shore.

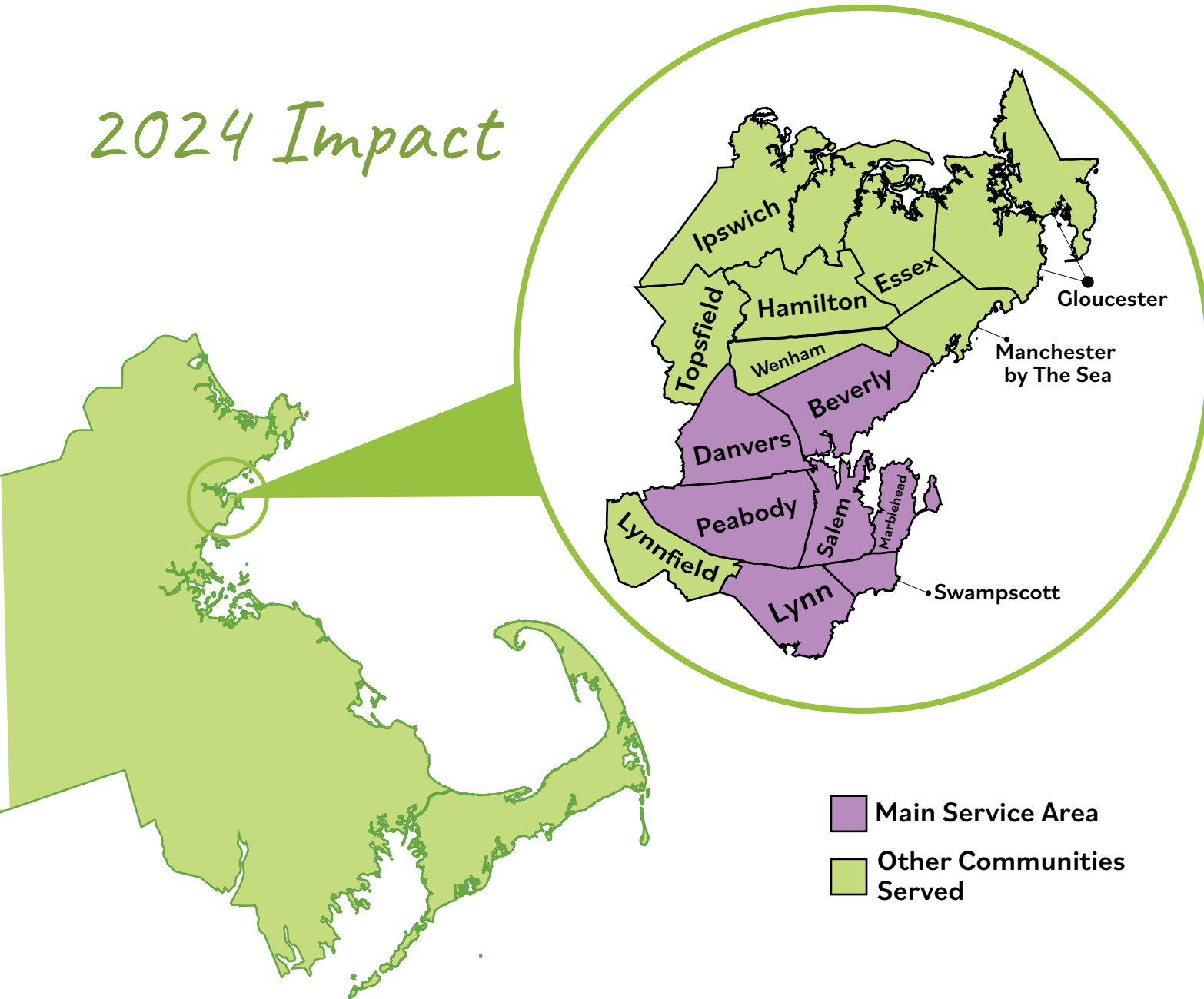


Securing our regional food safety net

The Salem Pantry ensures equitable, convenient access to nutritious food through **direct service**, our **Food Distribution Hub**, and as an official **SNAP Outreach Partner with the Department of Transitional Assistance**.

We are committed to expanding and enhancing our Food Distribution Hub as a key component of our strategic plan to ensure reliable access to food for all who need it.

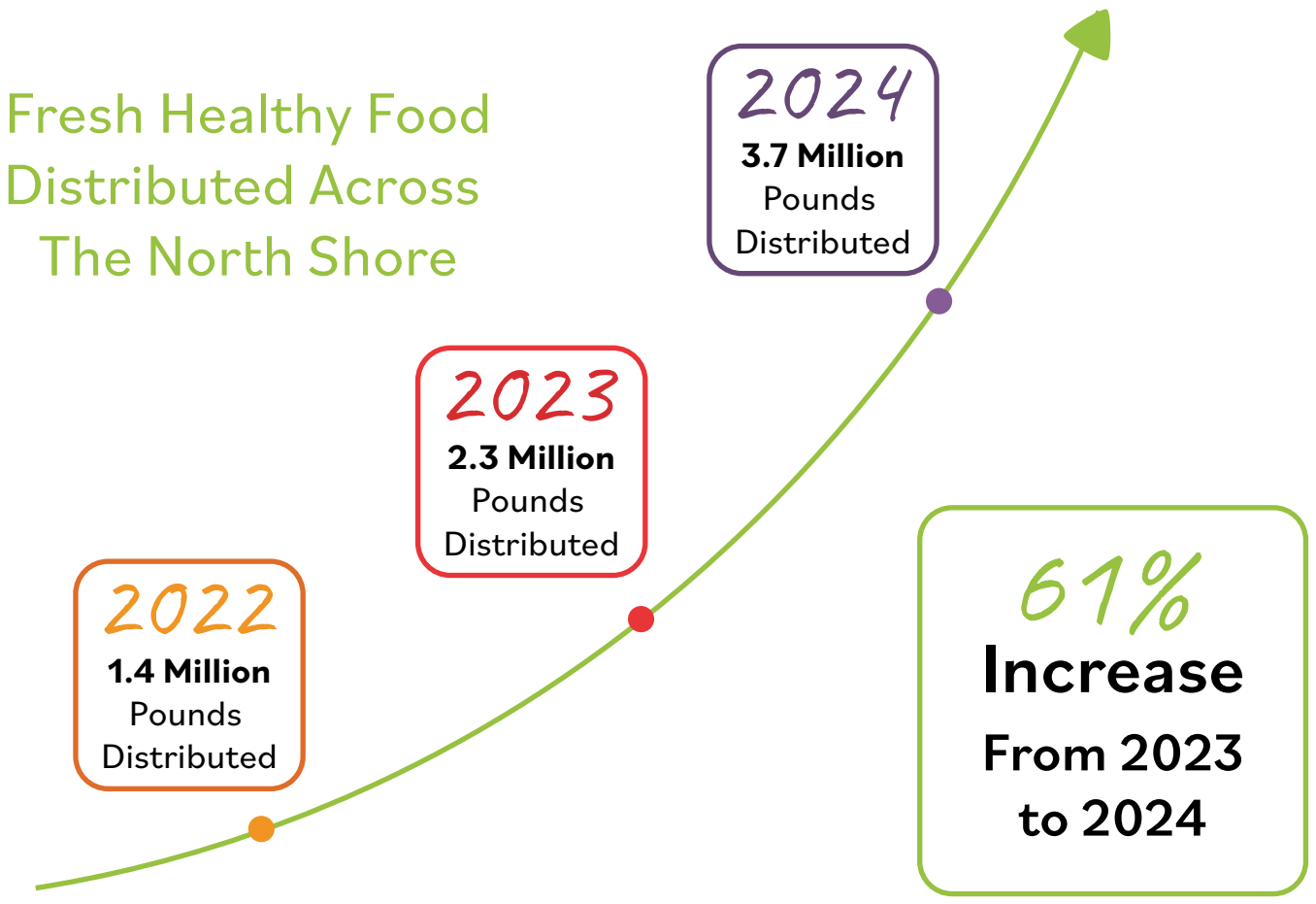
2024 Impact



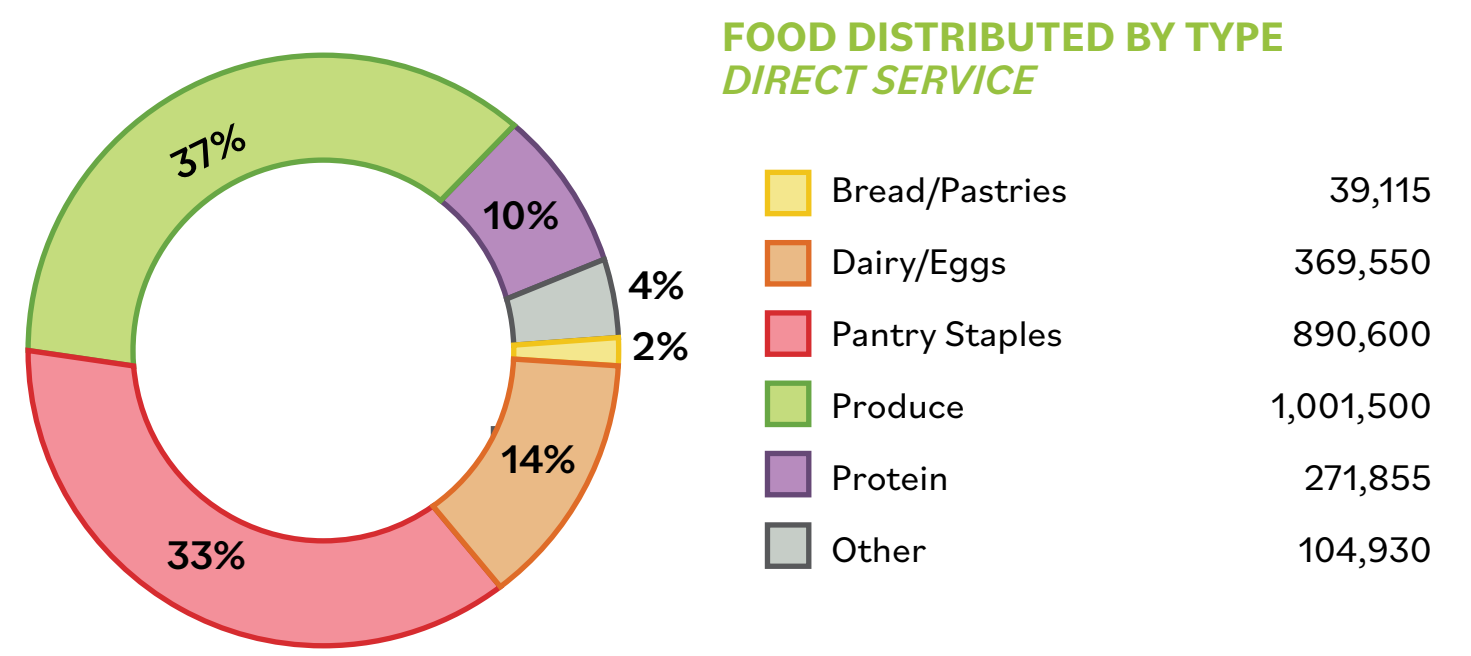
Main Service Area
 Other Communities Served

City/Town	Households Served Direct Service	Partner Organizations Food Distr. Hub
Salem	3,785	2
Lynn	4,300	6
Peabody	390	1
Beverly	125	1
Swampscott	155	1
Danvers	120	1
Marblehead	135	-
Other	550	6
Total	9,560	18

Fresh Healthy Food Distributed Across The North Shore



2.7 Million Total Pounds Distributed Through Direct Service



2024 Highlights



Community Partner of The Year Award

The Salem Pantry was honored to be named the **2024 Community Partner of the Year** by The Greater Boston Food Bank in recognition of our combined efforts to combat food insecurity on the North Shore.

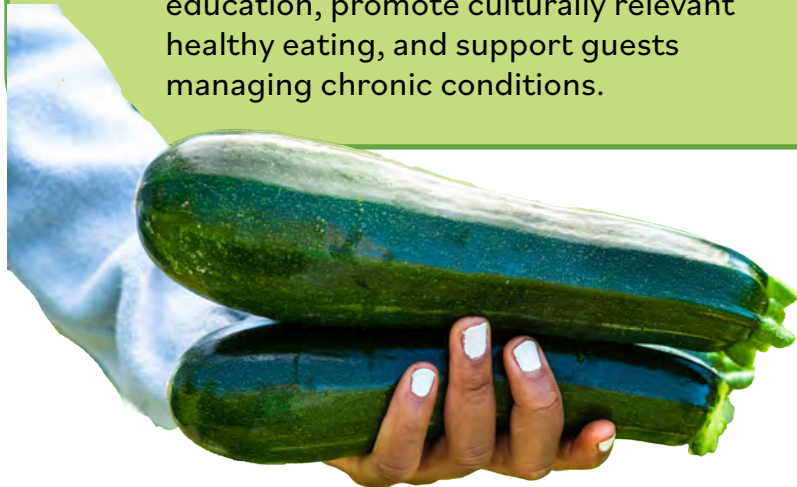


North Shore Moving Market Merge

Following their closure, The Salem Pantry took over the **North Shore Moving Market's** longstanding home delivery program, ensuring weekly groceries for homebound residents without interruption

Nutrition Partnership

The Salem Pantry teamed up with **Nutrition Harmony** to expand nutrition education, promote culturally relevant healthy eating, and support guests managing chronic conditions.

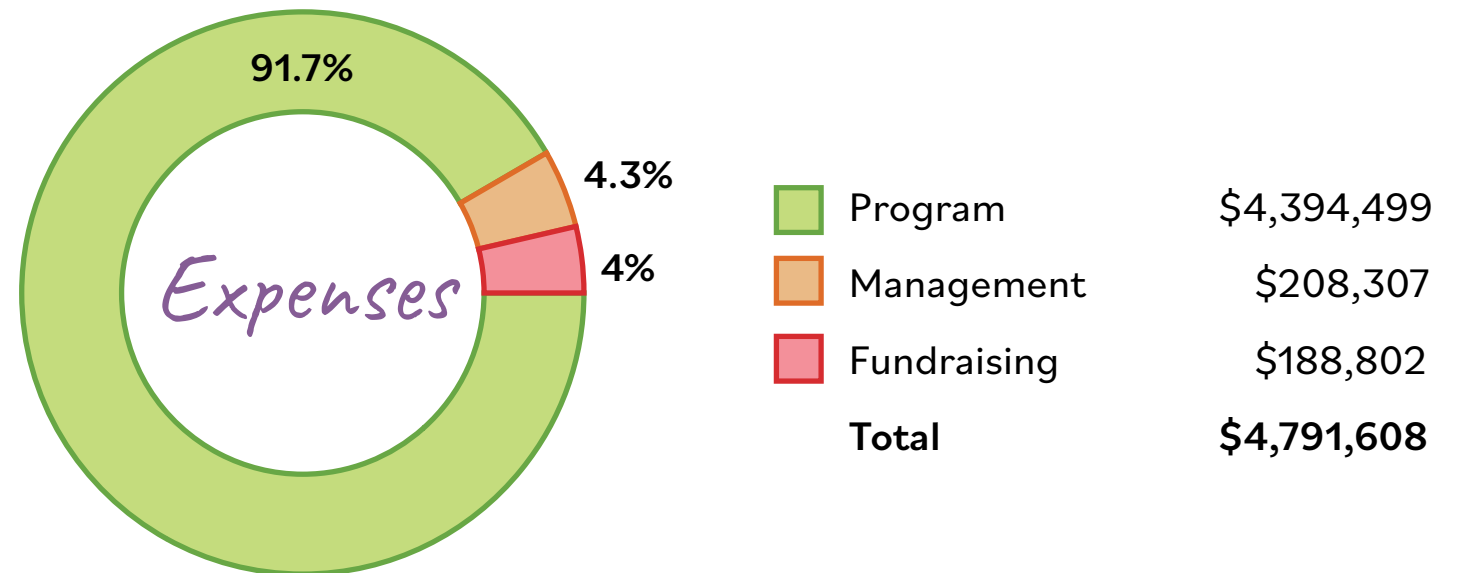
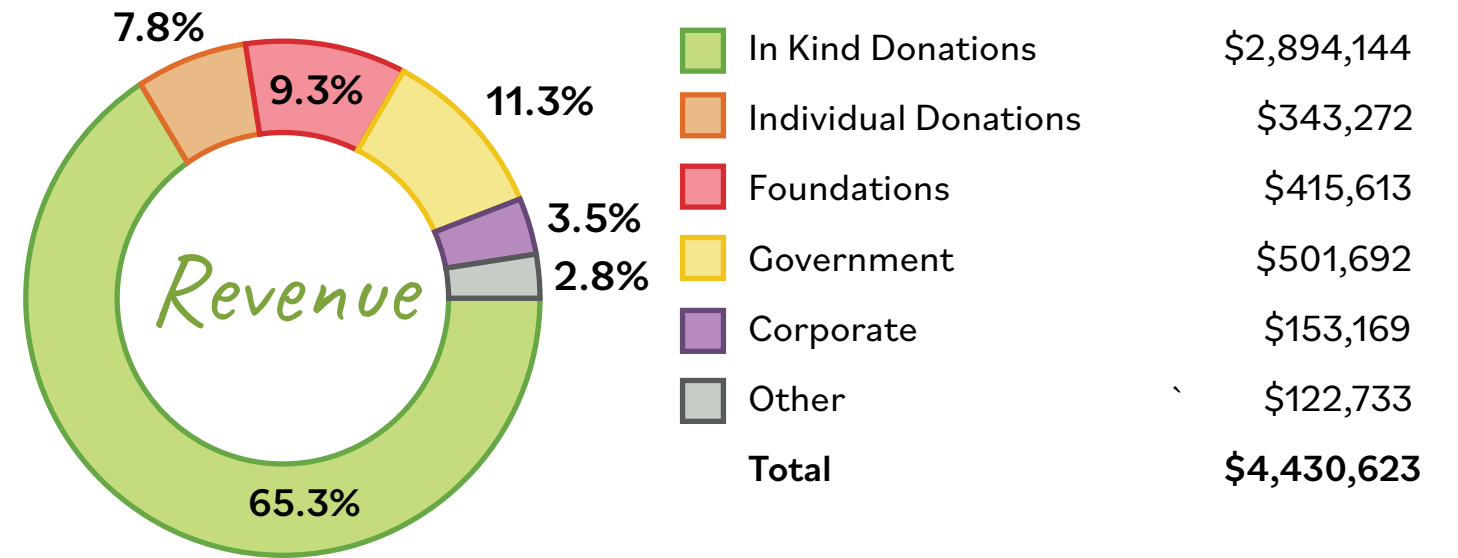


New Strategic Plan

The Salem Pantry's new strategic plan, developed with the support of **BananaBox Consulting**, outlines our direction for the next three years and positions us to take a leadership role in strengthening the regional food system.

2024 Operating Financials

January 2024 - December 2024



A copy of The Salem Pantry's audited financials are available at thesalempantry.org/impact-financials

Partners

The Salem Pantry proudly sources food from **The Greater Boston Food Bank** and the following food and farm partners:

- | | |
|---------------------------|---------------------------------------|
| A & J King Artisan Bakers | Maitland Mountain Farm |
| Abrantie Farms | New Entry Sustainable Farming Project |
| ALDI | Newhall Fields Community Farm |
| Baldor Specialty Foods | Northeast Animal Shelter |
| Boston Area Gleaners | Panera Bread |
| Bright Oasis Farm | Root |
| Codman Community Farms | Shaw's |
| Daily Table | Stop & Shop |
| Dunajski Dairy | The Food Project |
| Henry's Fine Foods | Trader Joe's |
| High Liner Foods | Whole Foods Market |
| Lulu's Bakery and Pantry | |
| Mack Park Food Farm | |

We work closely with the following partners to bring food into our community

- American Training
- Department of Transitional Assistance
- Marblehead Housing Authority
- Mass General Brigham Salem Hospital
- North Shore Community Development Coalition
- North Shore Food and Farm Coalition
- Preservation of Affordable Housing (POAH)
- Salem High School
- Salem Housing Authority
- Salem State University
- SOAR
- SPUR
- St. Stephen's Memorial Episcopal Church
- Swampscott Housing Authority
- The City of Salem
- Triangle Inc.
- UMASS Chan Medical School
- WinnCompanies

Volunteers

Thank You!

In 2024 The Salem Pantry's impact was made possible through the hard work of:

706 Volunteers

who contributed over

10,532 hours

of their time to to our mission.



Donors and Donations

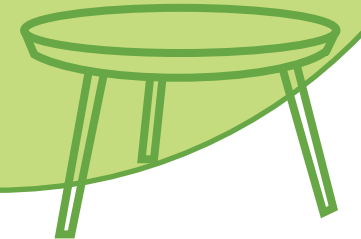
The Salem Pantry's work is made possible due to the generous support of our funders:

- Adelard A. and Valeda Lea Roy Foundation
- Alfred E. Chase Charity Foundation, Bank of America, N.A., Trustee.
- Amelia Peabody Foundation
- Arbella Insurance Foundation, Inc.
- Bob's Discount Furniture Charitable Foundation, INC
- Cell Signaling Technology (CST)
- Cummings Foundation
- Dunkin' Joy in Childhood Foundation
- Essex County Community Foundation
- Greater Boston Food Bank Community Investment
- Institution for Savings Charitable Foundation
- Leon Lowenstein Foundation
- Lydia E Pinkham Memorial Inc.
- MA Charitable Mechanic Association
- Mass General Brigham Salem Hospital
- Massachusetts Department of Agricultural Resources
- McCarthy Family Foundation, Bank of America, N.A., Co-Trustee.
- Metro Credit Union
- New England Biolabs
- North Shore Bank
- Project Dash
- Rockland Trust
- Salem Five Bank Charitable Foundation
- Salem Rotary
- Saquis Foundation
- The Agnes M. Lindsay Trust
- The City of Salem
- The Ludcke Family Foundation
- The Rotary Club of Salem
- Town Fair Tire Foundation Inc.
- United Way

The Table Builders

The Salem Pantry proudly recognizes those whose **\$10,000+** gifts show bold commitment to expanding food access across the North Shore.

- Anonymous (2)
- Burch Ives Family Charitable Foundation
- Erin and Seana Miller
- Jean Nichols Charitable Trust
- Michael Shea



In 2024:

820
INDIVIDUAL
DONORS

106
BUSINESS
DONORS

320
NEW
DONORS

The Nourishment Circle

The Salem Pantry's monthly giving community.

103
Members

\$75,540

Raised by members in 2024

Our Mission

The Salem Pantry's mission is to work collaboratively to empower our diverse local and regional communities by ensuring the essential right to convenient and reliable access to healthy food.



thesalempantry.org